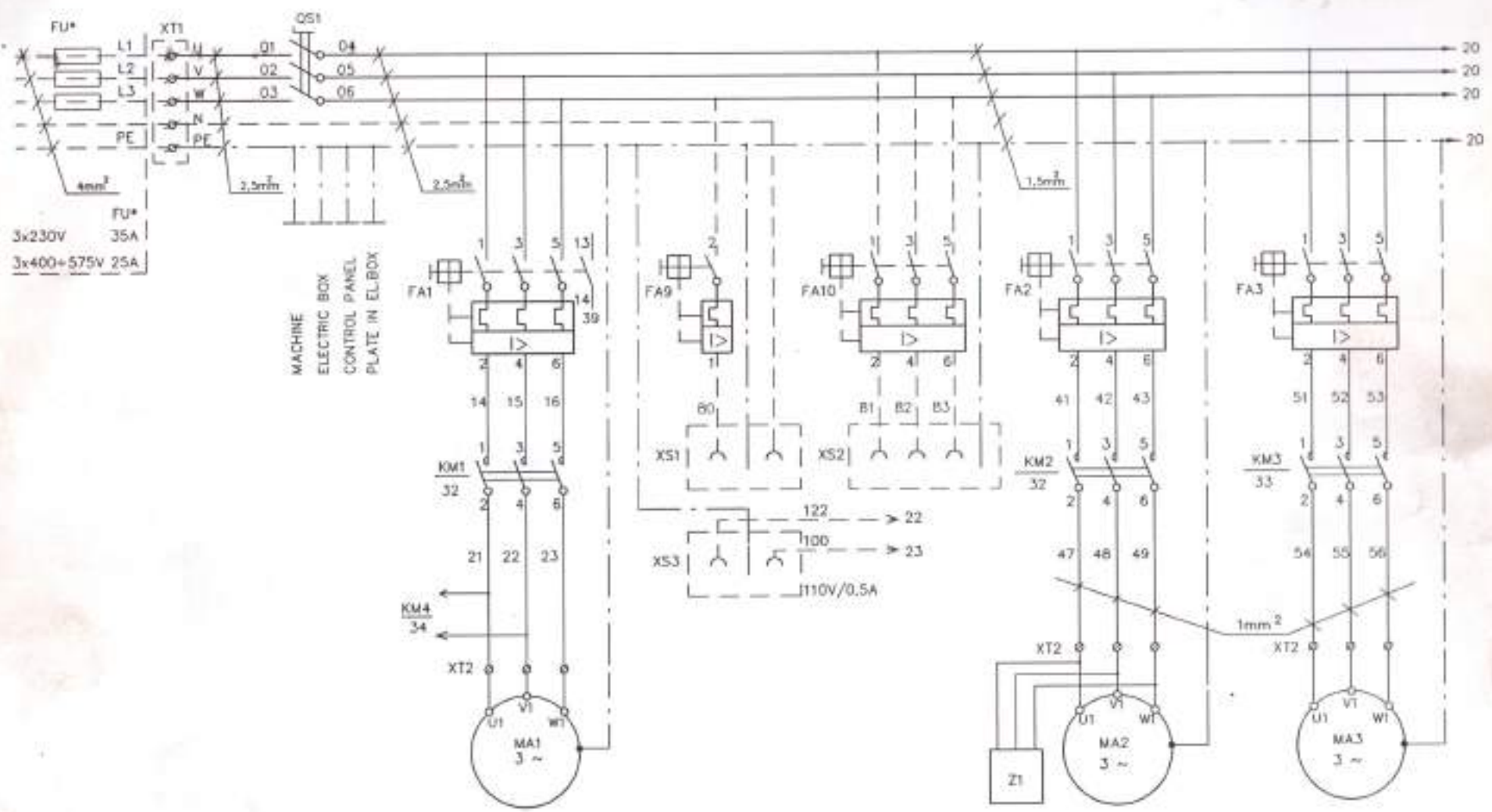


10	11	12	13	14	15	16	17	18	19
LINE OF USER	MAIN TERM	MAIN SWITCH	MAIN MOTOR		OPTION-PLUGS		RAPID FEED MOTOR		COOLING PUMP



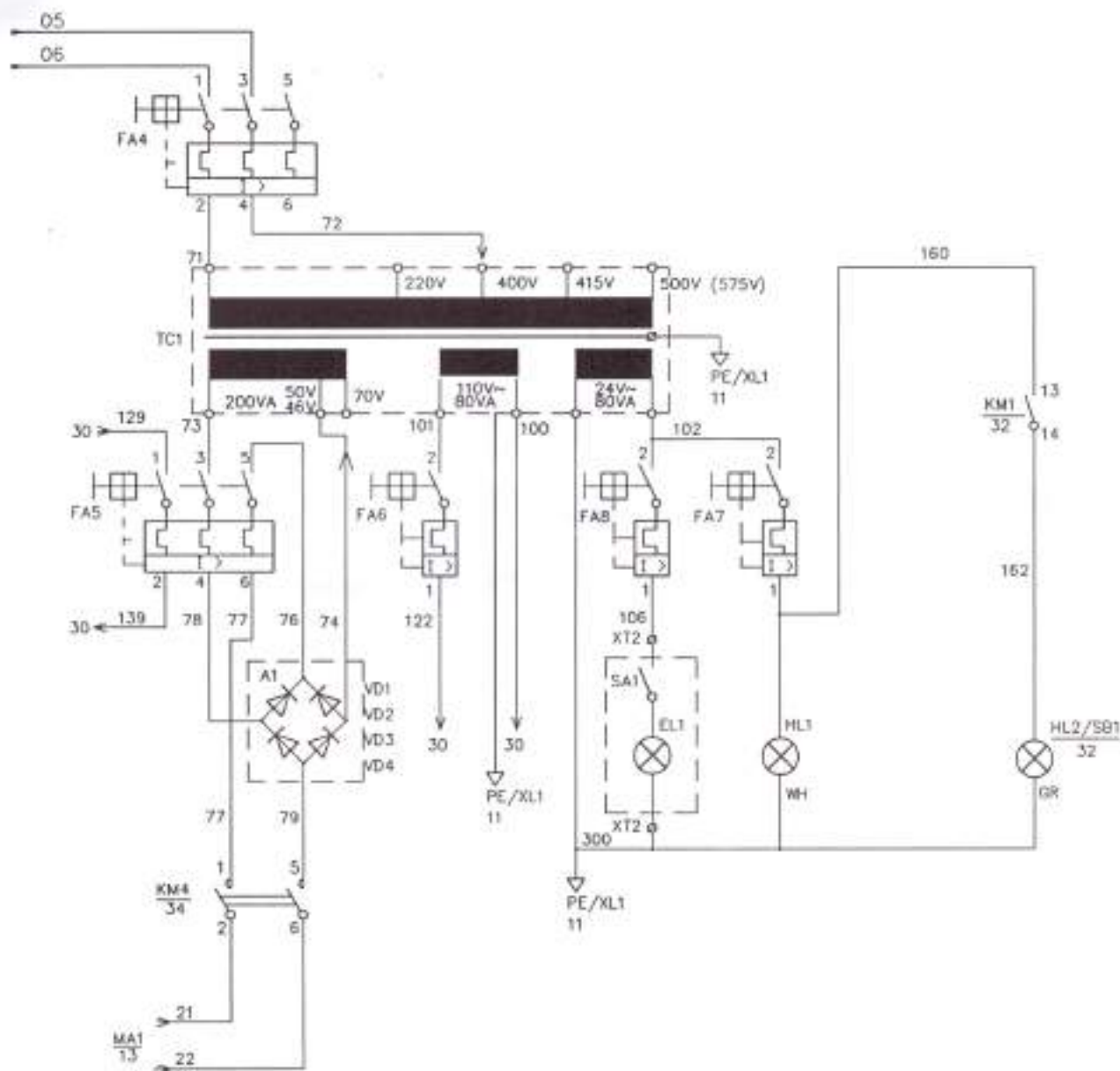
4-14.3

SN40-50C	3 07 98 3172	1/7
----------	--------------	-----

Moeller

SN 50

20	21	22	23	24	25	26	27	28	29
TRANSFORMER FOR SUPPLY				SIGNALIZATION					
DYNAMIC BRAKING		SOURCE 110V	SOURCE 24V	LAMP	MACHINE ON	START			

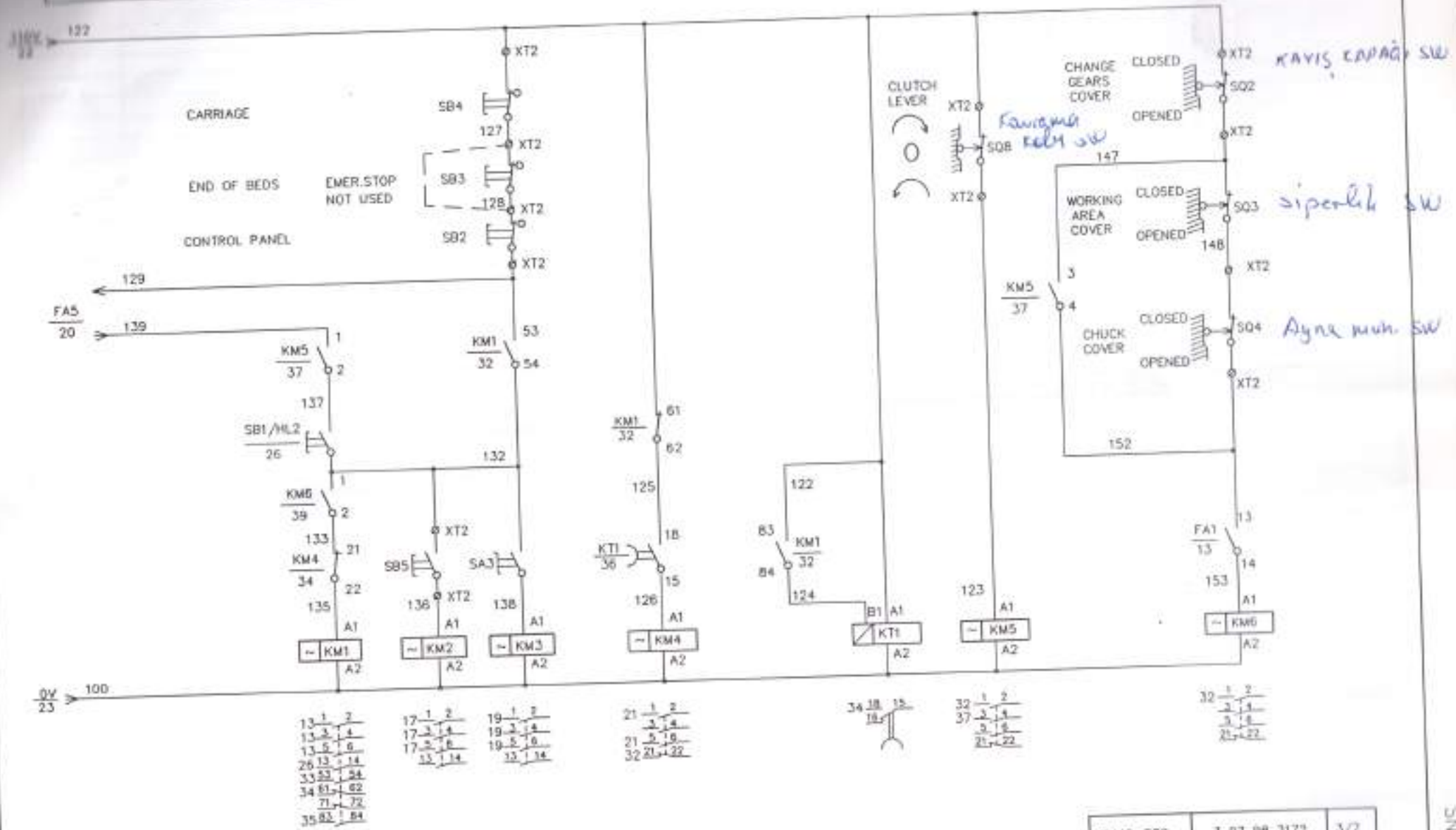


4-14.4

SN40-50C	3.07.98.3172	2/7
----------	--------------	-----

Moeller

SN 50



4-14.5

4-146

DESIGNATION	NAME	TYP	MAN.	NOTICE
A1:			TOS	
(VD1,2,3,4)	RECTIF. DIODE	KBPC 2510 25A/1000V	I	
EL1	LAMP	WALDMANN 24V, 60W	I	
FA1	CIRCUIT BREAKER	PKZMO-25 SET 20A	MO	FOR POWER SUPPLY
	AUXILIARY CONTACT	NH11-PKZ0	MO	
FA2	CIRCUIT BREAKER	PKZMO-4 SET 2,5A	MO	3X220V ONLY
FA3	CIRCUIT BREAKER	PKZMO-0,63 SET 0,5A	MO	
FA4	CIRCUIT BREAKER	PL7-D6/2	MO	
FA5	CIRCUIT BREAKER	PKZMO-20 SET 20A	MO	
FA1	CIRCUIT BREAKER	PKZMO-16 SET 11A	MO	FOR POWER SUPPLY
	AUXILIARY CONTACT	NH11-PKZ0	MO	
FA2	CIRCUIT BREAKER	PKZMO-1,6 SET 1,5A	MO	3X400V ONLY
FA3	CIRCUIT BREAKER	PKZMO-0,4 SET 0,3A	MO	
FA4 (2x)	CIRCUIT BREAKER	PL7-D4/1	MO	
FA5	CIRCUIT BREAKER	PKZMO-16 SET 16A	MO	
FA1	CIRCUIT BREAKER	PKZMO-16 SET 11A	MO	FOR POWER SUPPLY
	AUXILIARY CONTACT	NH11-PKZ0	MO	
FA2	CIRCUIT BREAKER	PKZMO-1,6 SET 1,5A	MO	3X415V ONLY
FA3	CIRCUIT BREAKER	PKZMO-0,4 SET 0,3A	MO	
FA4 (2x)	CIRCUIT BREAKER	PL7-D4/1	MO	
FA5	CIRCUIT BREAKER	PKZMO-16 SET 16A	MO	
FA1	CIRCUIT BREAKER	PKZMO-16 SET 10A	MO	FOR POWER SUPPLY
	AUXILIARY CONTACT	NH11-PKZ0	MO	
FA2	CIRCUIT BREAKER	PKZMO-1,6 SET 1,4A	MO	3X440V ONLY
FA3	CIRCUIT BREAKER	PKZMO-0,4 SET 0,3A	MO	
FA4	CIRCUIT BREAKER	PKZMO-4-T SET 2,5A	MO	
FA5	CIRCUIT BREAKER	PKZMO-16 SET 16A	MO	
FA1	CIRCUIT BREAKER	PKZMO-10 SET 9A	MO	FOR POWER SUPPLY
	AUXILIARY CONTACT	NH11-PKZ0	MO	
FA2	CIRCUIT BREAKER	PKZMO-1,6 SET 1,2A	MO	3X500V ONLY
FA3	CIRCUIT BREAKER	PKZMO-0,4 SET 0,3A	MO	
FA4	CIRCUIT BREAKER	PKZMO-2,5-T SET 2,2A	MO	
FA5	CIRCUIT BREAKER	PKZMO-16 SET 16A	MO	
FA1	CIRCUIT BREAKER	PKZMO-10 SET 8A	MO	FOR POWER SUPPLY
	AUXILIARY CONTACT	NH11-PKZ0	MO	
FA2	CIRCUIT BREAKER	PKZMO-1 SET 1A	MO	3X575V ONLY
FA3	CIRCUIT BREAKER	PKZMO-0,4 SET 0,3A	MO	
FA4	CIRCUIT BREAKER	PKZMO-2,5-T SET 2A	MO	
FA5	CIRCUIT BREAKER	PKZMO-16 SET 16A	MO	
FA6	CIRCUIT BREAKER	PL5-C2	MO	
FA7	CIRCUIT BREAKER	PL5-C2	MO	
FA8	CIRCUIT BREAKER	PL5-C4	MO	
FA9	CIRCUIT BREAKER	PL5-C10	MO	FOR OPTION ONLY
FA10	CIRCUIT BREAKER	PKZMO-10 SET 10A	MO	FOR OPTION ONLY

*MAN. ...MANUFACTORS OF EL. PARTS:

MO MOELLER

1 PART IS ORDERED THROUGH TOS TRENCIN SLOVAKIA

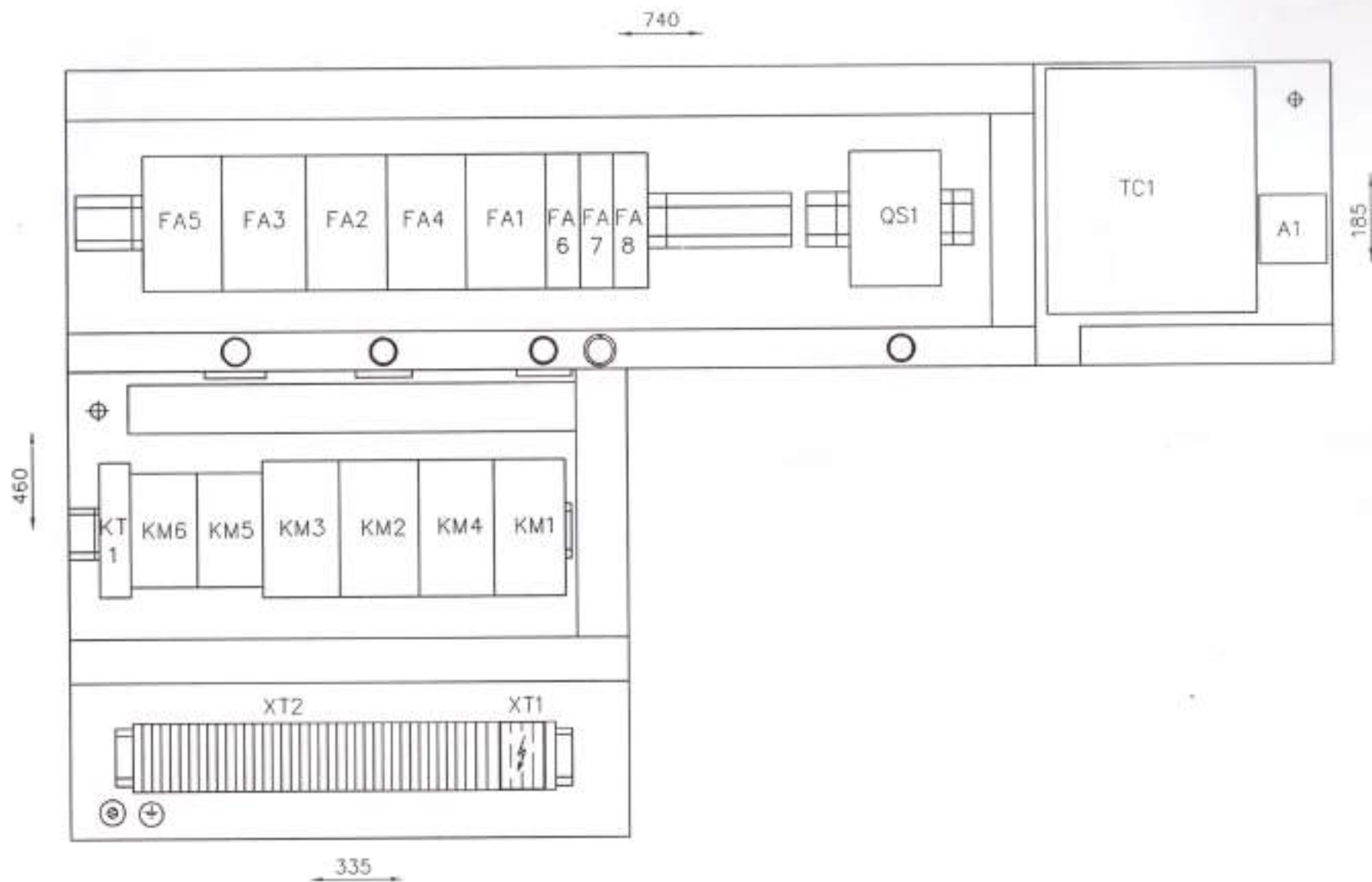
SN40-50C

3 07 98 3172

4/7

Moeller

SN 50



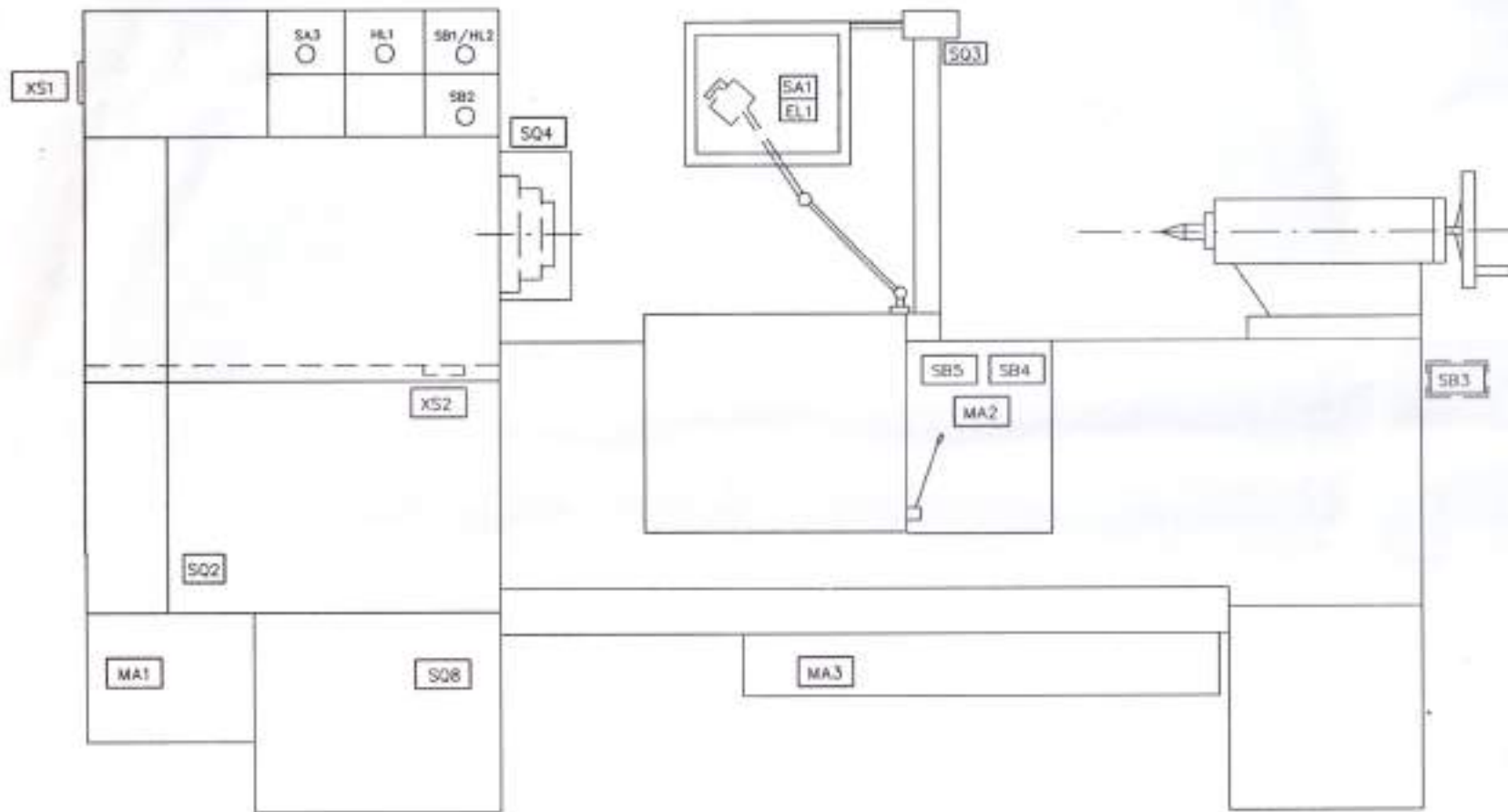
SN40-50C

3 07 98 3172

6/7

Moeller

4-14.9



SN40-50C	3 07 98 3172	7/7
----------	--------------	-----

Moeller

SN 50